



## **PROVIDER ALERT**

**June 25, 2010**

### **Pharmacy Data**

We are pleased to announce that consumer pharmacy data is now available on ProviderConnect.

The data is derived from the state's Medicaid pharmacy system, and is refreshed weekly. Information about all prescriptions filled, beginning January 29, 2009, for a Medicaid recipient is available. Please note: drugs prescribed for HIV and Substance Abuse are excluded from the report.

Providers can access the data for consumers currently receiving treatment in their program or practice. A ProviderConnect logon and the consumer's ValueOptions® Maryland identification number are required.

When a consumer is discharged from the provider's care, the consumer's data will no longer be available to the provider.

Please submit questions or comments via a ProviderConnect inquiry or contact Customer Service at 1-800-888-1965.

### **Instructions for accessing the pharmacy data in ProviderConnect**

Log in to Provider Connect



PROVIDERCONNECT VALUEOPTIONS

ValueOptions Home Provider Home Contact Us Log In

### Please Log In

Required fields are denoted by an asterisk ( \* ) adjacent to the label.

Please log in by entering your User ID and password below.

\*User ID

If you do not remember your User ID, please contact our e-Support Help Line.

\*Password  [Forgot Your Password?](#)

Log In

The information and resources provided through the ValueOptions site are provided for informational purposes only. Behavioral health providers utilizing the ValueOptions site ("Providers") are solely responsible for determining the appropriateness and manner of utilizing ValueOptions information and resources in providing services to their patients. No information or resource provided through the ValueOptions site is intended to substitute for the professional judgment of a behavioral health professional. Providers are solely responsible for determining whether use of a resource provided through ValueOptions is consistent with their scope of licensure under applicable laws and ethical standards.

*It is recommended that you use Internet Explorer when using ProviderConnect. Other internet browsers may not be compatible and may result in formatting or other visible differences.*

### New User?

Please register for access.

Register

For assistance with any technical problems (such as connecting to or accessing the site) please call our e-Support Help Line at

Click "yes" for your user agreement.

PROVIDERCONNECT VALUEOPTIONS

ValueOptions Home Provider Home Contact Us Log In

### User Agreement

The health information contained herein is provided by ValueOptions solely for informational purposes. ValueOptions assumes no responsibility or liability for any circumstances arising out of the use, misuse, interpretation or application of any information supplied on this system. Please consult with ValueOptions if you have any questions or concerns about the accessed information.

**Please affirm that you are authorized to access, receive, and use the information provided by responding "Yes" or "No" now.**

004234  
UNIVERSITY OF MARYLAND MEDICAL SYSTEM  
1301 YORK RD STE 600  
LUTHERVILLE TIMO, MD 21093

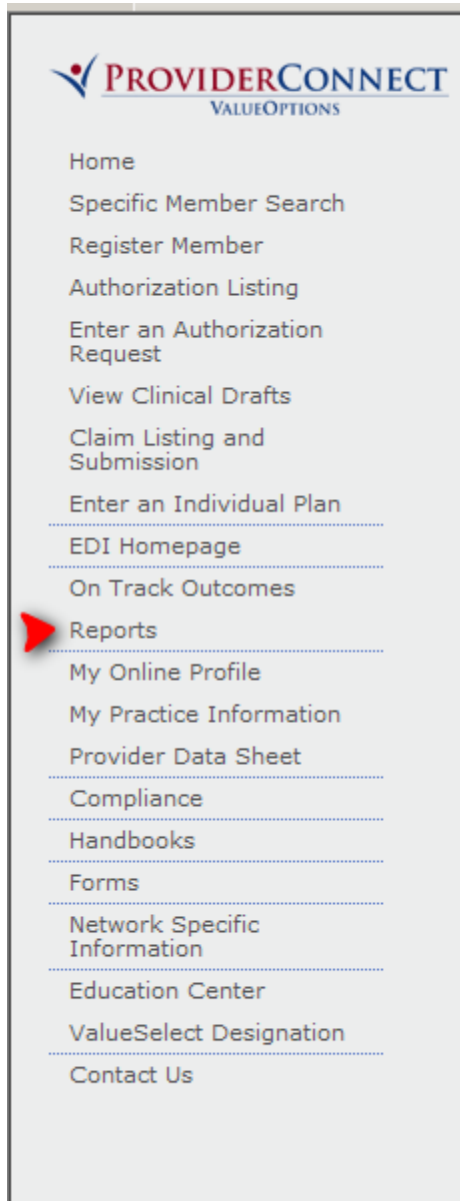
Yes  No

For assistance with any technical problems (such as connecting to or accessing the site) please call our e-Support Help Line at 888-247-9311 during business hours Monday through Friday 8AM - 6PM ET or you can email an Applications Support Specialist at e-SupportServices@valueoptions.com

© 2010 ValueOptions® ProviderConnect v3.13.04 [Return to ValueOptions Home](#) | [Return to Provider Home](#) | [Contact Us](#) | [Privacy Statement](#) | [Terms and Conditions](#)

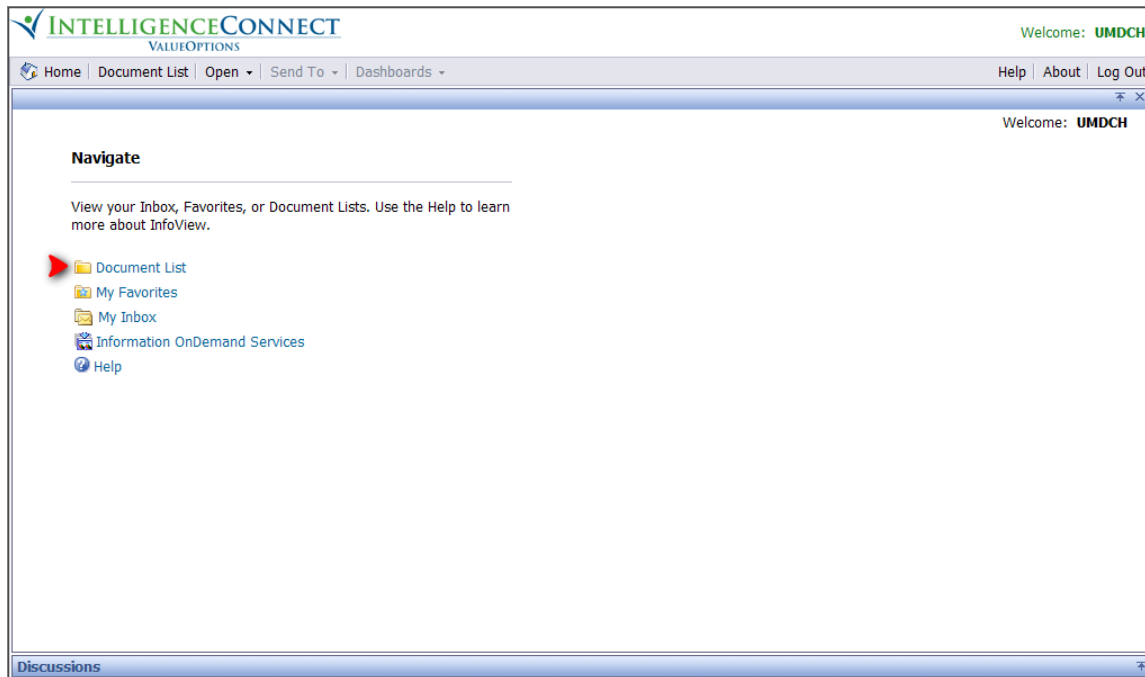
Choose "Reports."

P.O. Box 618  
Hanover, Maryland 21076  
<http://maryland.valueoptions.com>

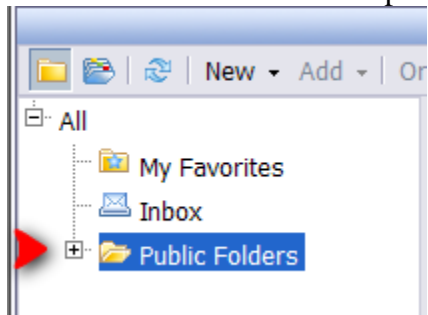


You will now be in Intelligence Connect.

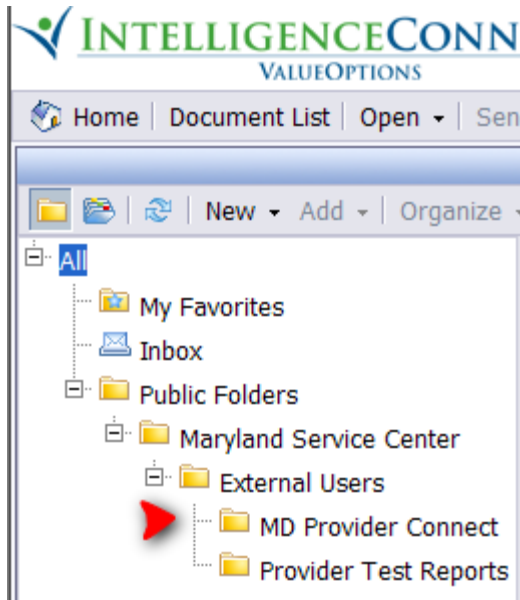
Choose "Document List."



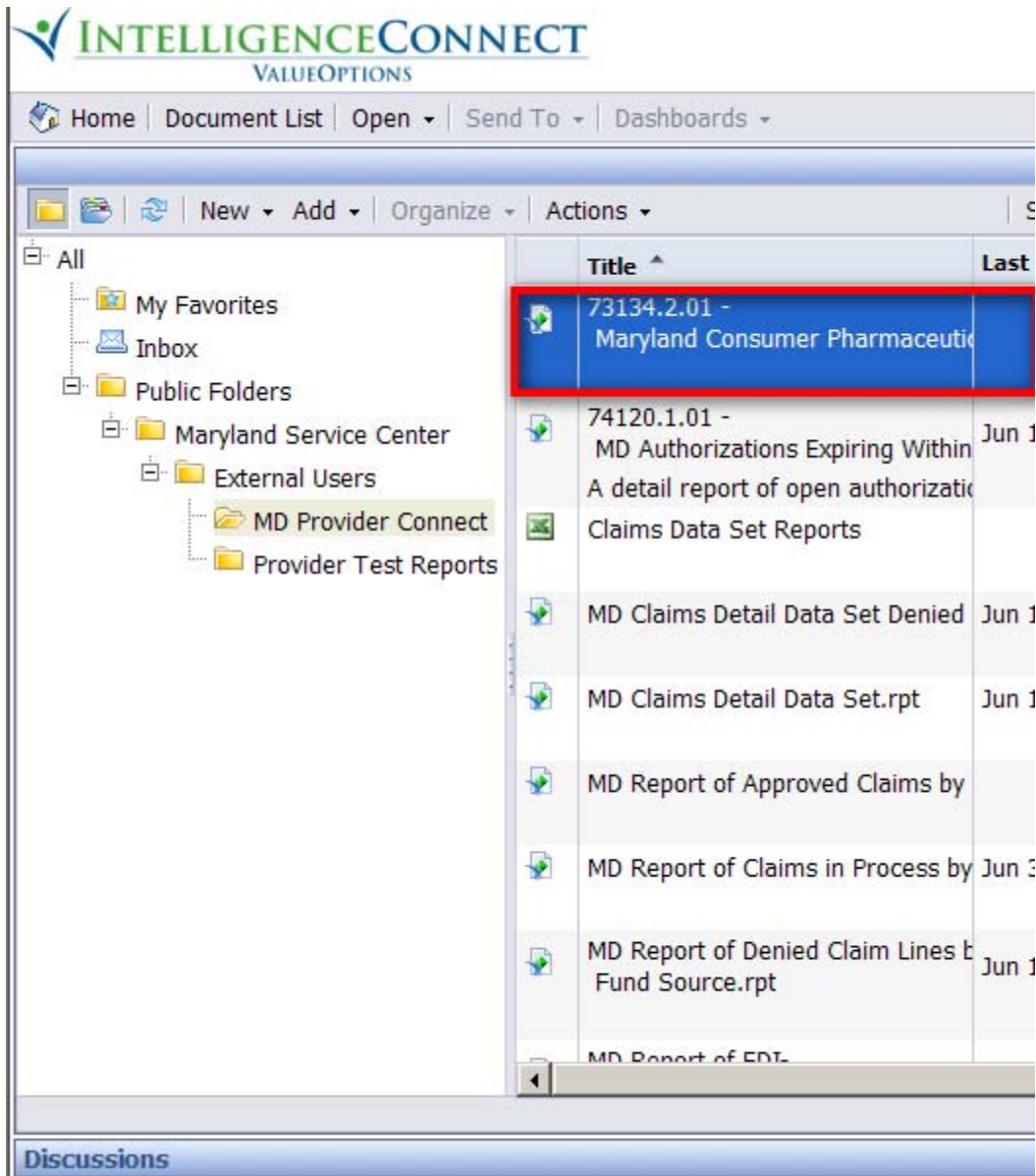
Choose "Public Folders." Expand the Public Folder by clicking on the "+" sign.



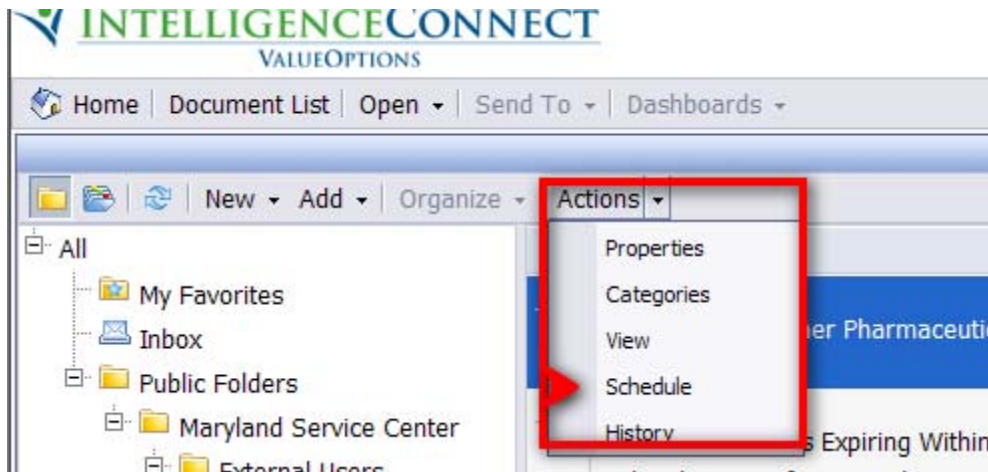
Continue to expand the folder by clicking on the "+" sign until you open completely to "MD Provider Connect."



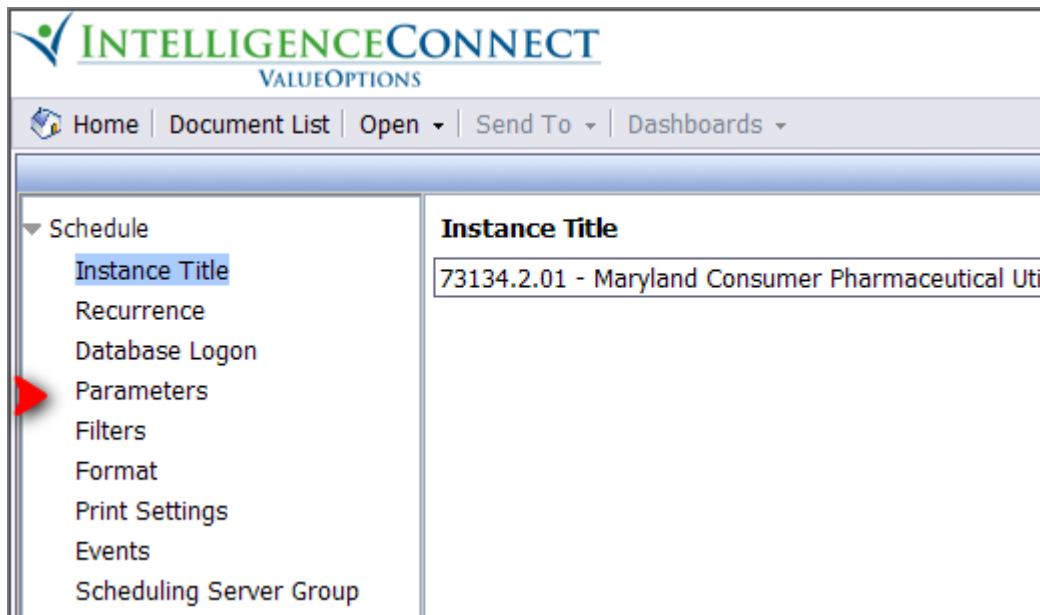
Once you open the MD Provider Connect folder – click on “Maryland Consumer Pharmaceuticals.”



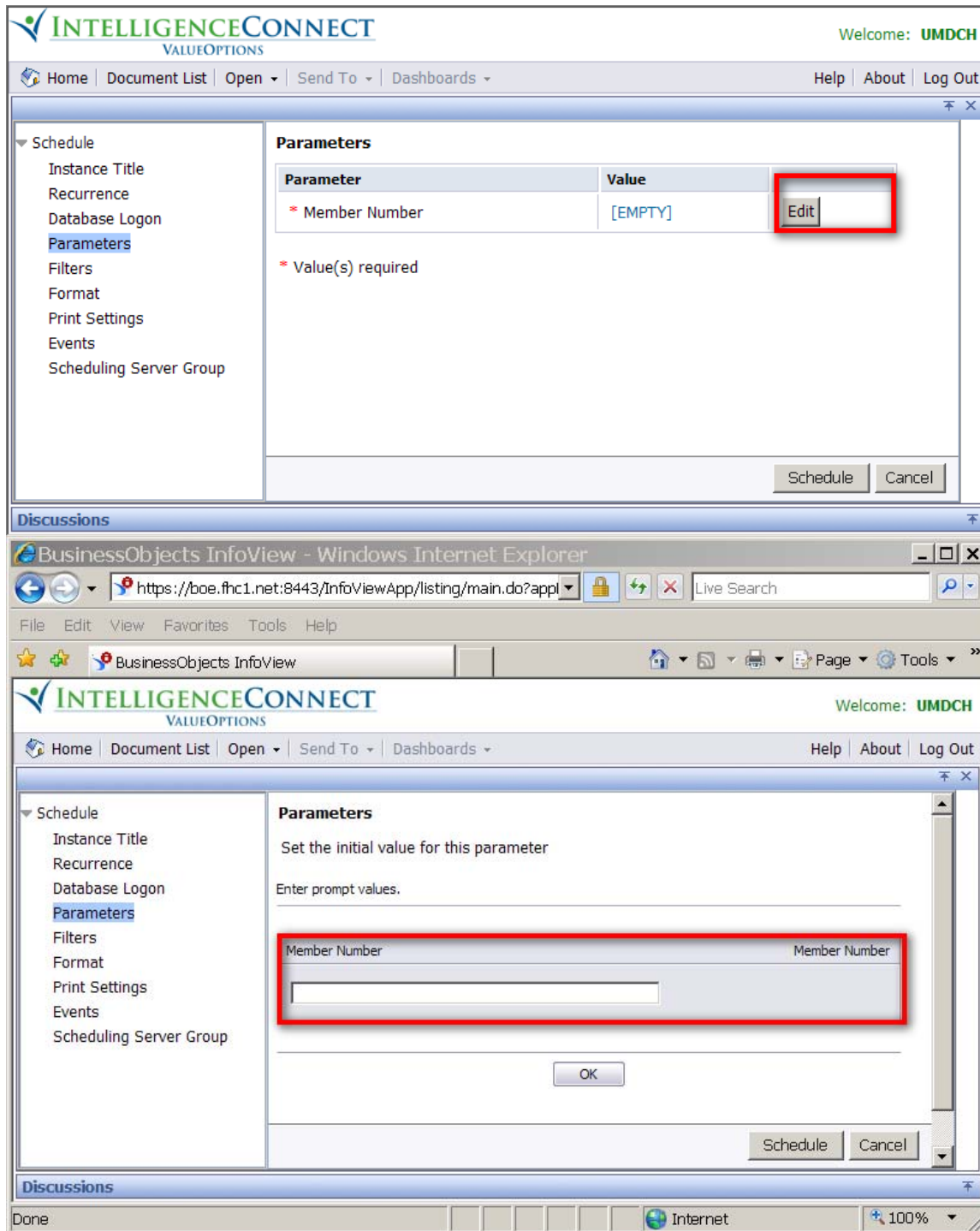
On the tool bar at the top open and drop down the choices under “Actions.” Choose “Schedule.”



Choose "Parameters."



When you open "Parameters", you will get the following screen. Click on the "Edit" button which will allow you to enter a consumer's identification number.



The screenshot displays the INTELLIGENCECONNECT VALUEOPTIONS web application interface. The top navigation bar includes "Home", "Document List", "Open", "Send To", "Dashboards", "Help", "About", and "Log Out". The user is logged in as "UMDCH".

The main content area is titled "Parameters" and contains a table with the following data:

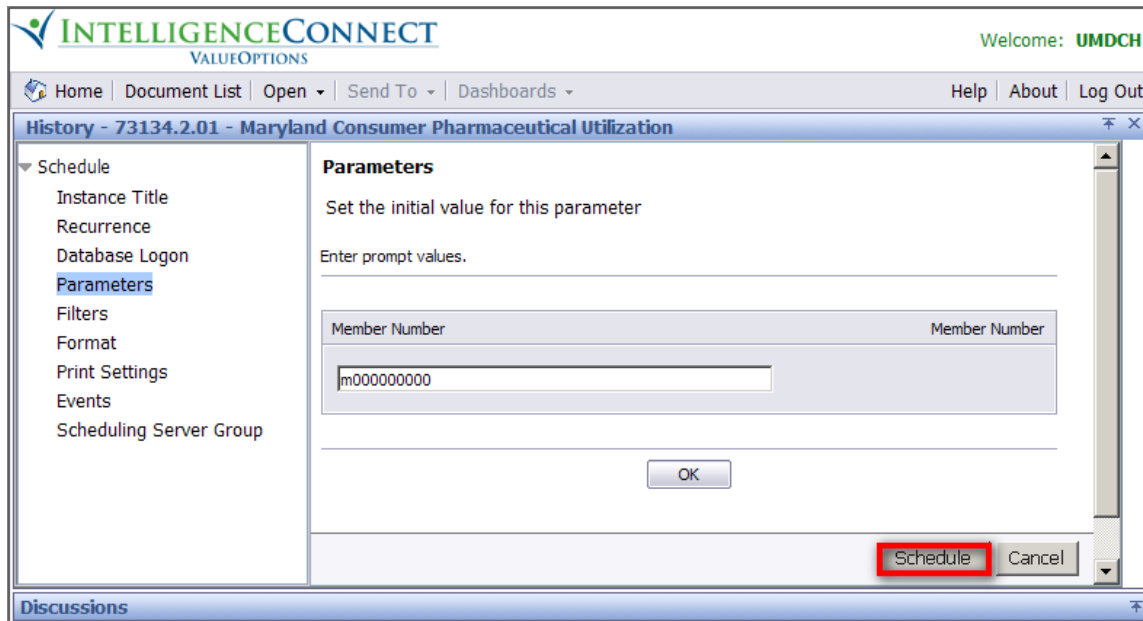
Parameter	Value	
* Member Number	[EMPTY]	<input type="button" value="Edit"/>

Below the table, there is a note: "\* Value(s) required". At the bottom of the main content area, there are "Schedule" and "Cancel" buttons.

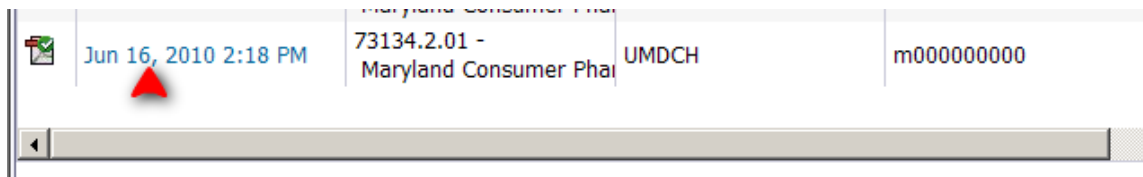
The browser window shows the URL: <https://boe.fhc1.net:8443/InfoViewApp/listing/main.do?appl>. The browser title is "BusinessObjects InfoView - Windows Internet Explorer".

Enter the consumer's identification number and click "Schedule."





The file will open for the identified consumer identification number. Click on the schedule date and the report will open.



The report will populate with the consumer's pharmacy information.



**INTELLIGENCECONNECT**  
VALUEOPTIONS

Welcome: **UMDCH**

Home | Document List | Open | Send To | Dashboards | Help | About | Log Out

1 / 1 58.8% Find

**VALUEOPTIONS** **ValueOptions Maryland**  
**Consumer Utilization**

Print Date: 06/16/2010 For the reporting period between and

Number of Prescribers:

Consumer Number: Consumer Name: Birth Date:

Date Filled	Drug Name and Strength	Metric Quantity	Days Supply	Amount Paid
Sub-Totals for ID#		Rx's		

Discussions

Done Internet 100%